

MATERIAL SPECIFICATION

SERIES: 700
NAME: MicroKote G
TYPE: multi layer coating
STRUCTURE: custom super micro refined steel
PARTICLE SIZE: 1.5µ +
OCCURRENCE: 375,000 ± / mµ²
COATING: multi-layer proprietary compositions

INDUSTRY APPLICATIONS

proprietary ink repellent coating eliminates particles from collecting behind blade, also eliminates the formation of slivers. Eliminates many common print defects such as streaks, fog, haze and reduces overall waste in rotogravure applications. Lower friction extends life to blade and cylinder many times.

DIMENSION

WIDTH: 0.40" to 3.15" (10mm to 80mm)
THICKNESS: 0.006" to 0.015" (0.15mm to 0.38mm)

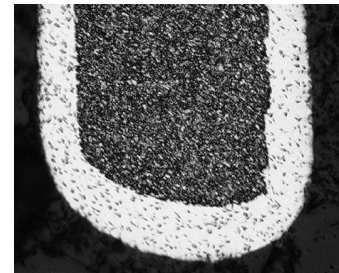
TIPS (see illustration)

TRUE RADIUS: polished on both sides
BEVEL: 2° / 15° / 30°
STEP LAMELLA: conventional from 0.0075" (0.05mm)
High strength and custom designs available



PERFORMANCE ADVANTAGES of MICROKOTE®

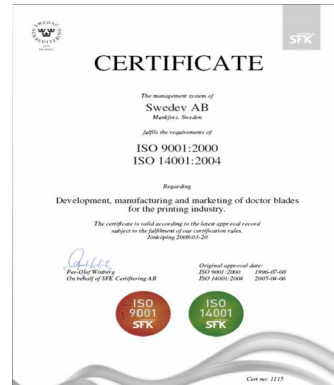
- OVERALL INK REPELLENT COATING
- PREVENTS PARTICLE STICKING
- ELEMİNATES MOST PRINT DEFECTS
- WEAR RESISTENT ELEMENTS IMBEDED INTO TIP
- LOWER FRICTION
- LONGER BLADE & CYLINDER LIFE
- RUN WITHOUT STOPPING DURING RUN
- IMPROVED INK METERING
- ELEMİNATES BLADE END BREAK-OUT
- POSSIBLE TO RUN ON MORE THAN ONE JOB



SWEDCUT® MICROKOTE G®

UNIQUE FEATURES OF SWEDCUT®

- SUPER REFINED MICRO STRUCTURE / PROPRIETARY COATING
- SINGLE SOURCED
- ISO CERTIFIED QUALITY ASSURANCE
- CUSTOM PRODUCT DEVELOPMENT AVAILABLE



SUPERIOR PRODUCTS, SERVICE AND SUPPORT FROM FLXON

- CUSTOM SUPPLY PLANS
- ASSURED AVAILABILITY
- SPECIAL DISCOUNTS AVAILABLE
- EXTENSIVE "JUST ASK" TECHNICAL SUPPORT
- PROCESS TECHNOLOGY CONSULTING
- PRESS ROOM AUDITS
- OPERATOR PRESS SIDE TRAINING
- G2 INK MANAGEMENT FOR FLEXO AND ROTO
- Pumps - Filters - Ink Service Carts - Ink Chambers - Roto Pans

OTHER PROCESS ENHANCING PRODUCTS AND SERVICES AVAILABLE FROM FLXON INC

pumps - filters - ink service carts - magnets - safety gloves
flexo ink chamber inking systems - high efficiency roto ink pans and blade holders

SWEDCUT® High Performance Doctor Blades

Designed - engineered - manufactured by
SWEDEV AB
Member MFS GROUP
munkfors - sweden

Exclusively imported and distributed in NAFTA
FLXON - Charlotte, NC USA
800.756.6474
Email: info@flxon.com

FLXON IS ACTIVE IN: ALLIANCE NET - FTA - PLGA