

**MATERIAL SPECIFICATION**

SERIES: 600  
NAME: M.FLEX II® LONGER LIFE BLADE  
TYPE: Custom Carbon Steel  
STRUCTURE: Super Micro Refined  
PARTICLE SIZE: 1.5µ +  
OCCURRENCE: 375,000 ± / mµ²

**INDUSTRY APPLICATIONS**

superior overall wear + smooth edge wear in wide range of flexographic and rotogravure applications using water, solvent, uv and eb inks and coatings, resists sliver formation

**DIMENSION**

WIDTH: 0.40" x 2.76" (10mm x70mm)  
THICKNESS: 0.006" x 0.008" (0.15mm x 0.20mm)

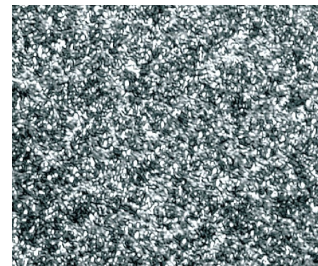
**TIPS** (see illustration)

TRUE RADIUS: polished on both sides  
BEVEL: 2° / 15° / 30°  
STEP LAMELLA: conventional from 0.0075" (0.05mm)  
High strength and custom designs available

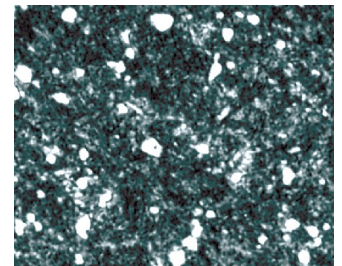


**PERFORMANCE ADVANTAGES**

- SLOWER + EVEN EDGE WEAR = LONGER LIFE
- REDUCED FRICTION
- LESS STRESS TO ANILOX + CYLINDER
- IMPROVED INK METERING
- SMALLER, LESS THREATENING WEAR DEBRIS
- FEWER PRINT DEFECTS LIKE LINES
- FINER INK FILMS
- FEWER STOPS DURING RUN



SWEDCUT® M.FLEX II®



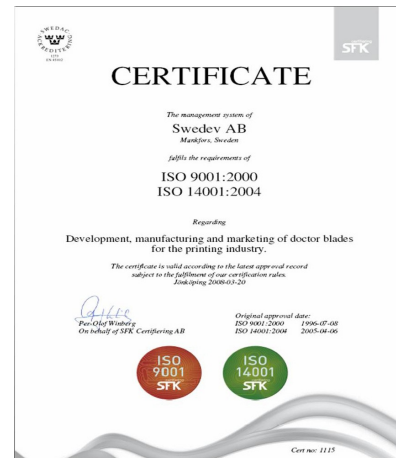
Common Strip Steel

**UNIQUE FEATURES OF SWEDCUT®**

- SUPER REFINED MICRO STRUCTURE
- SINGLE SOURCED
- ISO CERTIFIED QUALITY ASSURANCE
- CUSTOM PRODUCT DEVELOPMENT AVAILABLE

**SUPERIOR PRODUCTS, SERVICE AND SUPPORT FROM FLXON**

- CUSTOM SUPPLY PLANS
- ASSURED AVAILABILITY
- SPECIAL DISCOUNTS AVAILABLE
- EXTENSIVE "JUST ASK" TECHNICAL SUPPORT
- PROCESS TECHNOLOGY CONSULTING
- PRESS ROOM AUDITS
- OPERATOR PRESS SIDE TRAINING
- G2 INK MANAGEMENT FOR FLEXO AND ROTO
- Pumps - Filters - Ink Service Carts - Ink Chambers - Roto Pans



**OTHER PROCESS ENHANCING PRODUCTS AND SERVICES AVAILABLE FROM FLXON INC**  
pumps - filters - ink service carts - magnets - safety gloves  
flexo chamber inking systems - high efficiency roto ink pans and blade holders

**SWEDCUT® High Performance Doctor Blades**

Designed - engineered - manufactured by  
**SWEDEV AB**  
Member MFS GROUP  
munkfors - sweden

Exclusively imported and distributed in NAFTA  
**FLXON - Charlotte, NC USA**  
800.756.6474  
Email: info@flxon.com

FLXON IS ACTIVE IN: ALLIANCE NET - FTA - PLGA